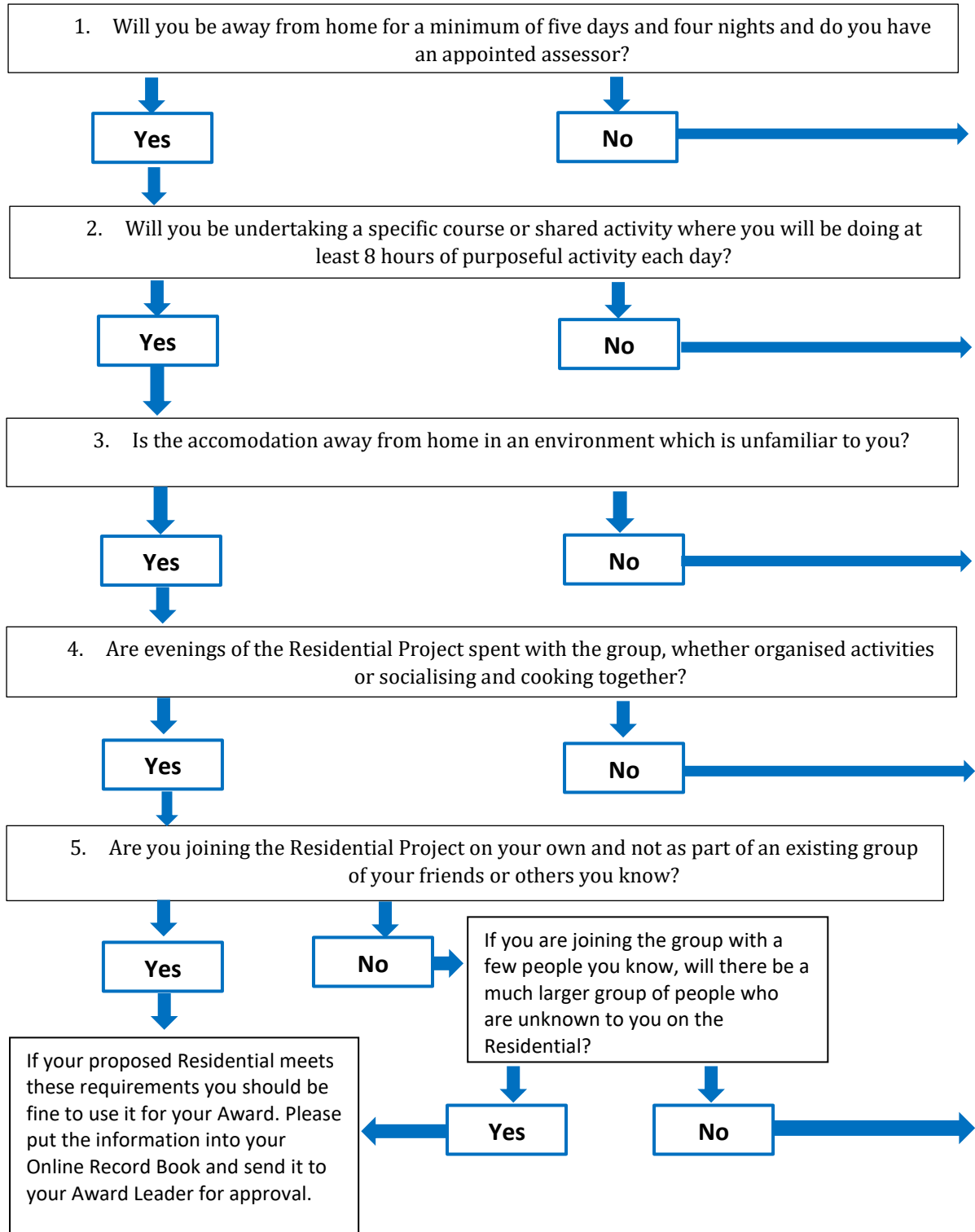


Gold Residential Project Checklist

The flow chart can be used to help decide if your choice of Residential activity can count for your Residential Project. **Please note you must be registered for Gold to do this.**



Talk to your Award Leader as this opportunity does not appear to meet the requirements of the Residential Project

Please email info@dofehillary.org.nz with Gold Residential Query in the subject line if you have any questions.